



2018-2019 Officers



Dan Carington
President



Mark Leonard
President-Elect



Deanna Adkison
Vice President



Kevin Doty
Secretary



Chris Pietrocarlo
Treasurer

November Meeting

Tuesday, November 13, 2018

Main Meeting:

**APPLYING NEEDLEPOINT COLD
PLASMA IN COMMERCIAL
APPLICATIONS TO REDUCE
VENTILATION AIR, CONSTRUCTION/
RENOVATION COSTS, ENERGY AND
MAINTENANCE**

RESEARCH PROMOTION

Please see **page 4** for more
information.

Where:

**Embassy Suites Hotel and
Conference Center**
550 Winter Street
Waltham MA, 02451

Meal Menu:

3 Course Plated Dinner Menu

Time:

5:30 - 6:30 PM Networking
5:30 - 6:15 PM Technical Session
6:30 - 7:00 PM Social/Registration/
Dinner
7:00 - 8:00 PM Main Presentation

Cost:

ASHRAE Boston Members: \$50
Non-ASHRAE Boston Members: \$60

Table of Contents

President's Message	2-3
November Meeting	4
Meet our Officers	5
GA Update	6-7
Historical News	8
Chapter News	9
Employment Ads	10
Student Activities/Editor's Note/ Webmaster's Note	11
CTTC	12
Society Updates/News	13
Building EQ	14
Annual Sponsor Program	15
Commitment Form	16
ASHRAE Meeting Schedule	17
BOG & Chairperson & Committees	18
ASHRAE Research	19



Last Meeting at Metro Meeting Center

Please register online at www.ashraeboston.org

If you have any questions, you may contact Lucas Rowe or Alex Gilman, Attendance Chair, at ashraebostonattendance@outlook.com.

Thank You



CHAPTER PRESIDENT'S MESSAGE

By: Dan Carington

Hello Members,

We would like to send a special thanks to Joe Singerling of Fulton Steam on his presentation on “How NOT to Design Steam System”, renamed “STEAM SYSTEM DESIGN” by the PIE society. His insight and knowledge of steam design was very informative, his presentation was well received and enjoyed by the members and guest that evening. During our meeting our Chapter Historian , Eric Edman covered a brief story of his early year in the sheet metal industry. Our Student Activity chair Yuka Narisako covered some student activity items and our Membership Promotion chair William Cunningham covered some information relating to membership status.

The November meeting has two presentation. Our main speaker will be Charles “Charlie” Waddell and our tech session topic will be by Jim Beaver for further info on the topics and presenter’s bio, please refer to their information below.

Please check out our social media websites, come and join us at LinkedIn <https://www.linkedin.com/groups/5053857/> , please continue to check out our website event page at <http://www.ashraeboston.org/eventspage> for information of upcoming chapter meetings, current officers listing , chapter newsletters, and contact information, along with other information.

The Boston Chapter has been assigned a Research Promotion (RP) goal of \$27,090 for the 2018-19 calendar. I am writing to ask you to help the chapter reach its assigned goal by making a contribution of \$100 to the ASHRAE Research – Boston Chapter Endowment before Nov. 10. By designating the RP donation to The Boston Chapter Endowment, you will help build up the Chapter’s endowment, get us closer to our assigned goal. Most if not all our BOG and committee chairs have already done so, and I am asking that our members to donate as well. Head to the link <https://www.ashrae.org/about/support-ashrae> and click on the green “DONATE NOW” under ASHRAE RP Campaign and a form similar to below will come up, fill it out like the example below and provide you other info that is requested by you and make you donation, thank you.

Thank you for your continued support of ASHRAE and ASHRAE Boston Chapter.

[Continued...](#)

CHAPTER PRESIDENT'S MESSAGE

Continued....

By: Dan Carington

Presidential Award of Excellence									
Boston Chapter - 2018-2019									
Chapter Members	Membership Promotion Points	Student Activities Points	Research Promotion Points	History Points	Chapter Operations Points	Chapter Technology Transfer Points	Government Affairs Points	Electronic Communications Points	Chapter PAOE Point Totals
1052	735	325	0	175	1430	400	50	50	3165

Invest in ASHRAE and Help Shape our Future

I would like to financially support ASHRAE's mission, programs, and member services indicated below: (indicate the amount you wish to contribute in U.S. dollars to any or all resources below)

U.S.\$ ASHRAE Research ASHRAE Research Canada

U.S.\$ ASHRAE Learning Institute and educational programs

U.S.\$ Endowed Research via ASHRAE Foundation.

* By checking the box, I indicate that I understand that these are endowed funds and permanently restricted for the support of ASHRAE Research.

Existing Fund Name (If known):

Boston Chapter

Click here to see existing endowments

U.S.\$ ASHRAE Scholarships (endowed scholarship support)

If "Other" is selected, please enter the name of the Scholarship

U.S.\$ ASHRAE General Fund

U.S.\$ Young Engineers in ASHRAE (YEA) Support

U.S.\$ **Total** contribution to be charged to credit card

Personal

Please check one:

Personal Contribution Company Contribution Chapter Contribution

(Honor Roll level contributions listed in ASHRAE's October Journal Issue start at \$100.00 for individuals and \$250.00 for companies.)

Look forward seeing everyone the evening of November 13th!

Any comments or questions I can help you out with please contact me at c001@ashrae.net

UPCOMING MEETING INFORMATION

Main Section Title of presentation: Applying Needlepoint Cold Plasma in Commercial Applications to Reduce Ventilation Air, Construction/Renovation Costs, Energy and Maintenance

Presentation Outline:

1. To understand both methods in ASHRAE 62 for determining ventilation rates
2. To become familiar with cold plasma technology
3. Understand how cold plasma technology reduces first cost and annual energy consumption in commercial applications when combined with the ASHRAE 62 IAQ Procedure
Understand how the technology reduces maintenance and improves IAQ

Speaker Bio:

Charles Waddell, is the President, CEO and founding member of global plasma solutions, a Savannah, Georgia, based air purification engineering and manufacturing company that specializes in government, education and healthcare air quality and energy saving solutions. Charlie's experience includes designing HVAC systems in the residential, commercial, and industrial markets as well as for the aviation and hand dryer industries. Charlie holds a BSEE from Old Dominion University. Prior to GPS, Charlie was the general manager of North America for Desiccant Rotors International, the Executive Vice President of Meadwestvaco Air Systems, a division of MeadWestvaco and a sales manager for Des Champs/Munters.



Charlie is an active member of ASHRAE and currently a participant of ASHRAE TC 2.3, SSPC 62.1 and formerly the secretary of TC 8.12. Charlie was a member of the USGBC Indoor Air Quality Assessment Committee, which set the guidelines for "acceptable air quality" within LEED certified buildings. Charlie has over 18 years of hvac design experience and has presented at over 50 different ASHRAE Meetings. Charlie's latest accomplishments include sixteen patents granted, multiple patents pending, having an article published in engineered systems magazine on desiccant dehumidification, winning the 2016 IAQ product of the year award by ACHR News Magazine for the new self-cleaning, no maintenance, universal voltage input, GPS-DM48-AC and having Global Plasma Solutions be a Top 40 Most Innovative technology company in Georgia in 2017 by the Technology Association of Georgia.

Tech Section Title of presentation: UV Lighting

Speaker Bio:

Jim Beavers, and his 28-years of HVAC experience, has been named Director-Commercial Sales at Fresh-Aire UV.



Fresh-Aire UV—div. of Triatomic Environmental Inc., a manufacturer of indoor air quality (IAQ) products in North America, has named indoor environmental quality (IEQ) industry expert James Beavers as its Director-Commercial Sales.

The 28-year HVAC veteran will initially begin filling in Fresh-Aire UV's developing North American network of specifying engineers and channel partners that sell and specify ultraviolet germicidal irradiation and PCO/activated carbon IAQ commercial solutions. Beavers will be targeting educational, hospitality, industrial, commercial and healthcare properties. Beavers will also actively assist with international sales and new IAQ product solutions.

"We've done a pretty good job on the residential side, but now we're looking forward to Jim spearheading the great growth opportunities that lie ahead for us in the healthcare, institutional and other commercial markets," said Ron Saunders, vice president, Fresh-Aire UV.

Prior to working in the UV industry, Beavers held director of sales and director of international business development positions for 13 years at ECR International. Beavers also spent seven years with the White Rodgers div. of Emerson Electric. He also holds a Bachelor of Science in finance/business management; and a Master of International Management in international business operations from the University of Maryland, College Park, Maryland.



Meet our Officers

By: Liz Desmarais

Perla Redfern



Tell us a little bit about your background (where you grew up, education, current position and what it entails)

I was born in Dominican Republic, but I spent most of my childhood in Puerto Rico. I moved to the US when I was 14. I have a Bachelors in mechanical engineering from Northeastern University. I'm currently a Business development manager for Siemens Building Technologies. My role consists of working with the Consulting engineering community in the greater Boston area, and supporting them with any technical questions they have about HVAC controls and integration.

How long have you been an ASHRAE member?

1.5yrs

Why did you join in the first place?

Networking

What positions have you held at ASHRAE and what is your current position?

I'm currently on the board serving for 1yr

What value do you derive from being a member?

The relationships I've developed are the most valuable thing. The monthly meetings give an opportunity to re connect with people in the industry that I often see at other events

What is your favorite thing about ASHRAE?

The people (And free wine lol)

What would you tell young people just entering our profession?

There are so many things we can do with an engineering degree in the HVAC industry, everything from the design to sales. Try different roles in your first 5yrs so that you have a better understanding what kind of career path you want to follow and the type of job you'd love doing.

Outside of the world of HVAC and ASHRAE what do you enjoy doing in your off hours?

I run after my 2.5yr old daughter. I enjoy spending time with my husband traveling and socializing. I've also been a part of Big Sister of greater Boston for the last 6yrs.



Government Affairs Update

By: Kevin Doty

October is Energy Awareness Month

President George H. W. Bush first designated October as [Energy Awareness Month](#) in 1991. This month now is recognized annually by the U.S. Department of Energy to encourage the government and organizations to raise awareness of the importance of sustainably managing energy resources.

International Energy Agency (IEA) Releases its Annual Report on Energy Efficiency

The report showed that the world's energy intensity fell by 1.7% in 2017, resulting in the smallest improvement to energy efficiency in over a decade. IEA attributes the decline to a [slowdown in the implementation of energy efficiency policies](#). The [174 page report](#) provides analysis for buildings and appliances and highlights that "two out of three countries lack mandatory building energy codes and 60% of the energy use for appliances is not covered by standards."

Canadian Energy Efficiency Budget Priorities in New Report

Efficiency Canada, an operating unit of the Carleton Sustainable Energy Research Centre, released a new report entitled, "[Building a Competitive Economy Through Energy Efficiency](#)," which lays out an energy efficiency strategy for Canada's Budget 2019, arguing that this strategy should boost competitiveness and growth for Canada.

Supreme Court Denies Appeal for HFC Case

The Supreme Court denied an appeal by manufacturers and environmentalists to rehear *Honeywell v. Mexichem Fluor*, a case that struck down an Obama-era EPA rule requiring the phase-down of hydrofluorocarbons (HFC). The case, which was last ruled on in 2017 by the U.S. Circuit Court of Appeals for the District of Columbia, allows for the continued use of HFCs that have high global warming potential (GWP).

DOE's Electricity Advisory Committee Meets to Discuss Grid Modernization

The U.S. Department of Energy (DOE) held an [Electricity Advisory Committee \(EAC\)](#) meeting on October 17 covering the topics of grid resilience and grid modernization. Assistant Secretary of the Office of Electricity Bruce J. Walker and Gil Bindewald, the Director for Advanced Grid R&D at DOE addressed attendees.

DOE Announces Research Funding for Solar Generation Projects

The U.S. Department of Energy (DOE) [announced up to \\$46 million in research funding](#) for solar generation that will help advance "holistic solutions that provide grid operators the situational awareness and mitigation strategies against cyber and physical threats."

Legionella Outbreaks Confirmed in Illinois and Wisconsin

[Continued...](#)

Government Affairs Update

By: Kevin Doty

[Continued....](#)

In Illinois, [six residents from Champaign County](#) have been diagnosed with the disease since September 15. Several locations are being investigated as the site of the infection, including a church where the patients may have participated in wedding activities.

In Wisconsin, [at least four cases](#) have been diagnosed where patients all stayed at the Osthoff Resort in Elkhart Lake.

Up to 18,000 Americans become ill annually because of Legionella growing in building water systems such as cooling towers. [ASHRAE's response is Standard 188](#).

Permanent Rulemaking in California on Proposition 65

The California Office of Environmental Health Hazard Assessment (OEHHA) [has given notice of permanent rulemaking](#) on *The Safe Drinking Water and Toxic Enforcement Act of 1986*, more commonly known in that state as Proposition 65. This initiative, passed in November 1986, mandates that a list of chemicals known to cause cancer or reproductive toxicity must be maintained and updated. Notice has been given that OEHHA proposes to establish two Proposition 65 Maximum Allowable Dose Levels (MADLs) for exposure to n-hexane by amending Section 25805(b) of Title 27 of the California Code of Regulations. The proposed oral MADL for n-hexane is 28,000 micrograms per day and the proposed inhalation MADL for n-hexane is 20,000 micrograms per day.

Energy Measures on State Ballots

Voters in many states will decide hundreds of statewide and local ballot measures in November 2018.

Arizona – [voters in Arizona will vote](#) on Proposition 127, Renewable Energy Standards Initiative. This initiative, if passed by the voters, would amend the state's constitution to require electric utilities in Arizona to acquire a certain percentage of electricity from renewable resources each year, with the percentage increasing annually from 12 percent in 2020 to 50 percent in 2030.

California – [voters in Alameda County will vote](#) whether or not to establish a 30-year plan, known as Vision 2050, intending to achieve a more resilient and sustainable infrastructure system, and to ensure that Berkeley is "resilient and prepared for the impacts of global warming."

Nevada – Nevada Question 3, The Energy Choice Initiative, and Nevada Question 6, Renewable Energy Standards Initiative have to do with electric utilities and their renewable resource requirements. Information can be found on [pages 25 and 66 here](#).

Oregon – a [clean energy measure](#) is on the ballot in Multnomah County that would require Portland retailers with total annual revenue over \$1 billion and Portland annual revenue over \$500,000 to pay a one percent surcharge on gross revenue from certain retail sales.

Washington – [Initiative 1631](#), a ballot initiative that would assess a carbon fee that would charge polluters for the right to emit carbon dioxide and greenhouse gases.



HISTORICAL NEWS

By: Eric Edman



As each month rolls around, I frequently find myself searching for something historical to write about. Put yourself in my shoes, and think about what you would write about ...

(I actually like to hear your suggestions at our monthly meetings)

I have had some ideas in the past, here is one: Trying to find the oldest operational boiler in the area, and look for the design engineer-or the firm(s) that had a hand in building it. Quite hard to do.

I also thought about the oldest building in Boston-and the heating, or cooling systems within. This presents quite a challenge as well, we have torn down lots of buildings, while others have rotted away.

I finally thought to myself, The Old Corner Bookstore (My Grandmother used to take me there) would likely be the oldest building in Boston-and still intact-maybe? I just happened to look for it physically, guess what? It closed, sold out, and is now the location of a fast food chain. I guess my old T square and electric eraser will be cast away someday as well. I was totally demoralized learning this was the fate of a Boston Landmark!!

What next? How about crafting a story of HVAC History at Boston Children's Hospital? This would be quite an undertaking to get the historical facts assembled-I could spend the entire ASHRAE season doing this, and fail to write a monthly news article.

I decided instead to think about what we focus on this time of year-and this month in particular: Thanksgiving.

What was Thanksgiving like in 1620 or 1621? I always wondered exact versus our Normal Rockwell images. There certainly was a lot of work required to keep warm in November. So, I will say thanks to all our founding fathers who invented wood stoves, gas furnaces, oil boilers, electric heaters, chimneys, and fans, air conditioners, and ALL the myriad of items we take for granted every day (until they don't work).

Give yourself a pat on the back for doing what you do to make the planet a bit more comfortable. Others may not thank you directly, but, rest assured, someone, somewhere is the better for what you do.

Have a wonderful Thanksgiving holiday with your family.



EVENTS

By: Eric Landry & Liz Desmarais



On Wednesday, October 17th our own Eric Edman brought one of our student chapters, the Northeastern University Sustainable Building Organization (NUSBO), on a tour of the Boston Children's Hospital. The tour focused on the history of BCH and the mechanical systems of multiple wings of the hospital, including the James Mandell building. About 25 students received some excellent insight about the evolution of HVAC systems in the hospital along with the unique challenges faced with designing mechanical systems in a hospital. The students even got to take a peek at the construction of the Hale Family Clinical Building and the increased gardens and green space that will be implemented there. The NUSBO student chapter organizes a weekly speaker series about sustainability in the built environment and puts on a few tours each semester. You can find them at www.NUSBO.org or on their social media accounts (NUSBO on Facebook and NUSBO16 on Instagram). If you are interested in speaking or want to get in touch, reach out to NUSBO at nusbo16@gmail.com.

Submitted by Eric Landry, NU

Eric is currently a student pursuing a Bachelor's Degree in Civil Engineering at Northeastern University. He is interested in Green Building Practices and the methodology of sustainable construction.





B2Q Associates is a growing Consulting Engineering firm located in Andover, MA. Our environment is fun, flexible, and rewarding, with a tremendous opportunity for professional and financial growth. We are looking for an **HVAC/Mechanical Energy Engineer** to continue the growth of our engineering group.

The ideal candidate would have a diverse background with experience in energy auditing and designing energy efficiency measures for healthcare, college and university, and manufacturing/industrial facilities. If you like variety, this is the place for you! The candidate must have excellent communication and interpersonal skills, strong technical knowledge, believe in continuous improvement, and be a team player. Ideally the candidate's skills would include:

- Three to seven years of experience in energy auditing, calculations, and report writing.
- Building and Process energy auditing and design experience: universities, commercial buildings, cleanrooms, science labs, healthcare, central plants, cogeneration, and building controls.
- Clear, organized calculations and very well-written documentation of energy efficiency measures.
- Experience commissioning new and existing facilities.
- Very strong skills with building controls and equipment operating strategies.
- Highly proficient with MS Word and Excel.
- Depth of knowledge of eQuest, Trace or other load calculation tools
- Interpret client requirements, identify and address operating parameters and engineering problems, and ensure solutions are implemented accurately and in budget. Capable of critical thinking, long term organization and system planning, and analysis to ensure success of projects.
- Experience with LEED and other green building standards.
- Depth of knowledge of Building and Energy Codes.
- Experience with AutoCAD and Revit.

At B2Q, we have a strong commitment to energy efficiency and making buildings and equipment operate at peak performance. The ideal candidate would share similar values regarding energy efficiency, and integrate those values into all aspects of their work. We offer a competitive salary commensurate with experience, a comprehensive benefits package, and a fun, dynamic, growing environment. If you would like to apply, please review our website at www.b2qassociates.com to find out more about us, and send a brief cover letter explaining why your experience and personality would be a good match for B2Q and include salary requirements. We are interested in every qualified candidate who is eligible and authorized to work in the United States.

ASHRAE Boston Chapter – Employment Ads

The NorthEastAire is published monthly, September through June. It is posted on the Chapter website at www.ashraeboston.org. A link is sent each month to all members of the Chapter, currently over 1000.

Newsletter Rate*: \$250 for 1/4 page, \$450 for 1/2 page, \$800 for full page

Website Rate*: \$300 per calendar month

Discount for Both Newsletter & Website*: \$500 - 1/4 page in newsletter and website ad
\$700 - 1/2 page in newsletter and website ad
\$1,050 - full page in newsletter and website ad

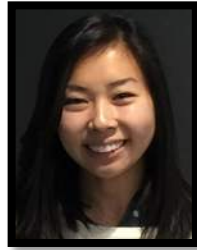
Format: Word format, company logos in .jpg or .gif

Deadline for December Newsletter: November 30, 2018

Any questions, please contact Sophia Scoon, Newsletter Editor at or northeastaire@gmail.com

Sponsors also get to post ads on the newsletter! To learn more please click [here](#)

*Prices are subject to change.



STUDENT ACTIVITIES

By: Yuka Narisako

We held one of our two (2) annual student nights at the October meeting, and we are looking forward to our next student night next spring. In October the chapter hosted the Northeastern University student branch, NUSBO (Northeastern University Sustainable Building Organization) for a tour of the mechanical systems at Boston Children’s Hospital. I was impressed by the attentiveness and passion these students have for sustainable building design, and I am confident that these young engineers will make a powerful impact in our industry’s future.

The application for this year’s annual scholarship funded by the ASHRAE Boston Chapter will be regulated through the ASHRAE society. Please stay tuned to <https://www.ashrae.org/communities/student-zone/scholarships-and-grants/ashrae-chapter-local-scholarship-programs> for the Boston Chapter scholarship information!

Student branches should be expecting their annual student branch checks shortly. If you are a student branch advisor and have not yet received your check, please do not hesitate to email me!

Please contact me at coo1sa@ashrae.net with any additional questions!



Webmaster’s Notes

By: Alex Gilman

Please make sure to add admin@ashraeboston.org to your “safe sender” list to prevent emails from going to your spam folder.

Please feel free to send comments and suggestions to coo1web@ashrae.net

Here are some additions to look forward to for THE ASHRAE Boston Chapter Site in the following weeks.

- Updated monthly pictures of previous from previous ASHRAE meetings
- Schedule of future ASHRAE Events



2018-2019 edition materials for the December newsletter is due by **November 30, 2018**.

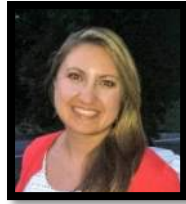
Please submit employment/want ads in .pdf, .doc or .jpg format. A company logo may also be included. Feel free to send any ideas you would like to share or include in next issue.

For additional information, refer to our website at www.ashraeboston.org.

EDITOR’S NOTE

By: Sophia Scoon

For more information, please e-mail northeastaire@gmail.com



CTTC

By: Deanna Adkison

12 Oct 2018

Atlanta, GA

ASHRAE and ASPE Strengthen Partnership with Signing of New MoU Agreement

Media Contact:

Allen Haynes

404-446-1677

ahaynes@duffey.com

ATLANTA (Oct. 12, 2018) – ASHRAE and the American Society of Plumbing Engineers (ASPE) have signed a new Memorandum of Understanding (MoU) formalizing the organizations' relationship.

The MoU was signed by 2018–2019 ASHRAE President-Elect Darryl Boyce, ASHRAE Executive Vice President Jeff Littleton, 2016–2018 ASPE President Mitch Clemente, CPD, FASPE, and ASPE Executive Director/CEO Billy Smith, FASPE, on Oct. 1. The agreement defines parameters on how the two societies will collaborate more closely to continue furthering and promoting the advancements of a more sustainable built environment.

These include but are not limited to: general advocacy; research; technical committee coordination; joint conferences and meetings; training and education programs; publication distribution and chapter collaboration.

"We are excited about exploring collaborative ventures with ASPE," says Sheila J. Hayter, 2018–2019 ASHRAE President. "Many ASHRAE members work in firms that provide a full spectrum of mechanical, electrical, and plumbing (MEP) services. The water-energy nexus in buildings is becoming more pronounced as we push buildings to perform using integrated building design tools and techniques."

"Working with other professional societies in the broader engineering community is critical in today's fast-paced world of evolving technologies and engineering methods," says Smith. "We look forward to working together with ASHRAE to promote ongoing education, best practices, networking and new technologies for a more sophisticated and sustainable indoor environment."

About ASHRAE

ASHRAE, founded in 1894, is a global society advancing human well-being through sustainable technology for the built environment. The Society and its more than 56,000 members worldwide focus on building systems, energy efficiency, indoor air quality, refrigeration and sustainability. Through research, standards writing, publishing, certification and continuing education, ASHRAE shapes tomorrow's built environment today. More information can be found at www.ashrae.org/news.

About ASPE

ASPE is the only professional organization devoted to the training and certification of plumbing engineers and designers. ASPE and its 6,400 worldwide members are dedicated to protecting the health, welfare, and safety of the public through the dissemination of technical data and information to expand the base of knowledge among plumbing engineers, designers, contractors, code officials, inspectors, and manufacturers. For more information, visit www.aspe.org.

SOCIETY NEWS

ASHRAE, founded in 1894, is a global society advancing human well-being through sustainable technology for the built environment. The Society and its members focus on building systems, energy efficiency, indoor air quality, refrigeration and sustainability within the industry. Through research, standards writing, publishing and continuing education, ASHRAE shapes tomorrow's built environment today. ASHRAE was formed as the American Society of Heating, Refrigerating and Air-Conditioning Engineers by the merger in 1959 of American Society of Heating and Air-Conditioning Engineers (ASHAE) founded in 1894 and The American Society of Refrigerating Engineers (ASRE) founded in 1904. In 2012, as part of a rebranding, ASHRAE began doing business as "ASHRAE" vs. using its full legal name of the American Society of Heating, Refrigerating and Air-Conditioning Engineers. Use of ASHRAE reflects the Society's worldwide membership and that services will continue evolving globally.



[CONTACT US](#)



[SOCIETY SNAPSHOT](#)



[ASHRAE'S CORE VALUES](#)

ASHRAE's Mission and Vision

Mission: To advance the arts and sciences of heating, ventilating, air conditioning and refrigerating to serve humanity and promote a sustainable world.

Vision: ASHRAE will be the global leader, the foremost source of technical and educational information, and the primary provider of opportunity for professional growth in the arts and sciences of heating, ventilating, air conditioning and refrigerating. [Learn More](#)

With more than 56,000 members from over 132 nations, ASHRAE is a diverse organization representing building system design and industrial processes professionals around the world.

[BECOME A MEMBER](#)



Building EQ

Be an Energy Genius 

ASHRAE's Building Energy Quotient program takes your building on the next step beyond benchmarking. The program provides a quick energy analysis, assists in preparation of an ASHRAE Level 1 Energy Audit, and provides actionable recommendations for improving a building's energy performance including low-cost, no-cost energy efficiency measures and an Indoor Environmental Quality survey with recorded measurements.

Two different evaluations can be used independently to compare a candidate building to other similar buildings in the same climate zone or together for an assessment of a building's design potential compared to actual operation:

In Operation compares actual building energy use

- Based on actual metered energy use of a building
- Assists in preparation of on-site ASHRAE Level 1 Energy Audit
- Measurements confirm that indoor environmental quality is not compromised for energy savings

As Designed compares energy use based on the building's physical characteristics and systems

- Simulated standardized energy use model
- Independent of operational and occupancy variables

Benefits:

- Includes metered energy data exchange from ENERGY STAR® Portfolio Manager
- Median EUI calculation aligned with ENERGY STAR Portfolio Manager
- Details actionable recommendations to improve a building's performance
- Streamlines and improves the audit process
- Utilizes standard and consistent process for tracking improvement over time
- Creates an opportunity to reassess building performance following implementation of energy efficiency improvements to assess effectiveness (improved performance/rating)
- Provides a Building EQ performance score (efficiency) to benchmark building
- Offers a building label to recognize high performance buildings

For additional information, please visit ashrae.org/BuildingEQ





ANNUAL CORPORATE SPONSOR PROGRAM

Support the ASHRAE Boston Chapter by becoming a Sponsor and shining the spotlight on your organization!

EVENT BEVERAGE SPONSOR \$1500

- Donation of \$300 in your company name to ASHRAE Research – Boston Chapter Endowment
- Company name listed in the ASHRAE Insight and earn Honor Roll Corporate Status
- Company name display and recognition on name badges at the sponsored event
- One (1) complimentary tickets to the Annual Sponsor Recognition Event

SILVER LEVEL SPONSOR \$2000

- Donation of \$1000 in your company name to ASHRAE Research – Boston Chapter Endowment
- Company name listed in the ASHRAE Insight and earn Honor Roll Corporate Status
- Company name display on ASHRAE Boston Chapter website and monthly meetings for one year*
- Full-page ad in the Boston Chapter Roster & Product Guide for one year*
- Recognition on name badges at all events for one year*
- One (1) complimentary tickets to the Annual Sponsor Recognition Event

*ASHRAE Calendar Year – July 1 to June 30 of the following year

GOLD LEVEL SPONSOR \$3000

- Donation of \$1500 in your company name to ASHRAE Research – Boston Chapter Endowment
- Company name listed in the ASHRAE Insight and earn Honor Roll Corporate Status
- Company name display on ASHRAE Boston Chapter website and monthly meetings for one year*
- Full-page ad in the Boston Chapter Roster & Product Guide and half-page ad in the Boston Chapter newsletter – North-eastAire for one year*
- Recognition on name badges at all events for one year*
- Two (2) complimentary tickets to the Annual Sponsor Recognition Event
- Complimentary hole sponsor sign at the annual ASHRAE Boston Chapter Golf Tournament

PLATINUM LEVEL SPONSOR \$5000

- Donation of \$2500 in your company name to ASHRAE Research – Boston Chapter Endowment
- Company name listed in the ASHRAE Insight and earn Honor Roll Corporate Status
- Company name display on ASHRAE Boston Chapter website and monthly meetings for one year*
- Full-page ad in the Boston Chapter Roster & Product Guide and the Boston Chapter newsletter – NortheastAire for one year*
- Recognition on name badges at all events for one year*
- Four (4) complimentary tickets to the Annual Sponsor Recognition Event
- Company name on event name badge lanyards for one year*
- Complimentary hole sponsor sign at the annual ASHRAE Boston Chapter Golf Tournament

*ASHRAE Calendar Year – July 1 to June 30 of the following year

COMMITMENT FORM

I would like to become a sponsor for the ASHRAE Boston Chapter!

SPONSORSHIP LEVEL

Please check one

- PLATINUM \$5000
- GOLD \$3000
- SILVER \$2000
- EVENT \$1500

PAYMENT METHODS

PayPal – <http://ashraeboston.org/oursponsors>

Check – please mail the completed form and check to:

Chris Pietrocarlo

[10 Guest St](#)

4th Floor

Boston, MA 02135

SPONSORSHIP CHECKLIST

Please submit the following when you register to become a sponsor

- Sponsorship Commitment Form completed
- Company ad in high-resolution ESP or JPG format to be place in the Roster & Product Guide and/or the NortheastAire.
- Company logo in high-resolution ESP or JPG format to be place on the pre-meeting presentation and/or the Boston Chapter homepage

Questions? Please contact any of the ASHRAE Boston Chapter Corporate Sponsorship Committee members.

Mark Leonard

co01rp@ashrae.net

Dan Carington

co01@ashrae.net

Deanna Adkison

co01vp@ashrae.net

Bob Persechini

rpersechini@nv5.com



2018-2019 Meeting Schedule

Date	Main Meeting/ Tech Session	Speaker	PDH Credits	Location/ Special Night
September Tuesday, 11 2018	Main Event: MIT NANO	Facility Manager Greg Shenstone	N/A	50 Vassar street Cambridge, MA, 02139
October Tuesday October 09, 2018	Main Event: How not to design a steam system	Joe Sterling	Yes	Metro Meeting Centers 101 Federal St. Boston Membership Promotion/YEA / Student Activity Night
November Tuesday November 13, 2018	Main: Applying Needlepoint Cold Plasma In Commercial Applications To Reduce Ventilation Air, Construction /Renovation Costs, Energy And Maintenance	Charlie Waddell	1.5	Embassy Suites 550 Winter St. Waltham
	Tech Session: UV Light	Jim Beavers	TBD	Research Promotion
December Tuesday December 11, 2018	RADIANT METAL CEILINGS	John Matuszek, MBA	TBD	Metro Meeting Centers 101 Federal St. Boston
	Tech Session: TBD	TBD	TBD	WIA
January Tuesday January 08, 2019	TBD	TBD	TBD	Embassy Suites 550 Winter St. Waltham
	Tech Session: TBD	TBD	TBD	Past President/ History & Hall of Fame Induction
February Tuesday February 12, 2019	TBD	TBD	TBD	Metro Meeting Centers 101 Federal St. Boston
	Tech Session: TBD	TBD	TBD	Membership Promotion/YEA/Student Activity Night
March Tuesday March 12, 2019	SUSTAINABILITY AND RESILIENCE - EXAMPLE OF COMMUNITY AND CAMPUS ENERGY ASSESSMENTS	CHONGHUI LIU (CL), PE	Yes	Embassy Suites 550 Winter St. Waltham
	Tech Session: TBD	TBD	TBD	
April Thursday April 09, 2019	WBGH Tour	David Price	N/A	
	TBD	TBD	TBD	
May May XX, 2019	2019-2020 Installation of Officers	TBD	TBD	TBD
		TBD	TBD	TBD
June Tuesday June 4, 2019	Golf Outing	TBD	N/A	Granite Links 100 Quarry Hill Dr. Quincy, MA 02169
				Research Promotion

OFFICERS

President
Dan Carington
BR+A
617-925-8236
coo1@ashrae.net

Secretary
Kevin Doty
Victaulic
coo1sec@ashrae.net

Treasurer
Chris Pietrocarlo
BR+A
coo1tr@ashrae.net

President-Elect
Mark Leonard
BR+A
617-925-8322
coo1pe@ashrae.net

Vice President
Deanna Adkison
Fitzemeyer & Tocci
781-285-2262
coo1vp@ashrae.net

BOARD OF GOVERNORS

2016-2019	2017-2020	2018-2021
Darcy Carbone Stebbins Duffy, Inc. 617-957-2567 coo1bog2@ashrae.net	Bob Persechini NV5 617-345-9885 coo1bog8@ashrae.net	Yuka Narisako BR+A coo1bog12@ashrae.net
Perla Redfern Siemens coo1bog7@ashrae.net	Lance Brown BVH coo1bog5@ashrae.net	Nick Roth NE Applied Products coo1bog6@ashrae.net
Steve Tafone Suffolk Construction 978-774-1057 coo1bog10@ashrae.net	Chris Pietrocarlo BR+A coo1bog1@ashrae.net	Sophia Scoon Jacobs coo1bog9@ashrae.net
Erin Popa BR+A 617-925-8205 coo1bog4@ashrae.net	William Tang BR+A 617-254-0016 coo1bog11@ashrae.net	Doug Rothmann Norman Associates coo1bog3@ashrae.net

COMMITTEES

Attendance
Lucas Rowe
Accuspec Inc.

Alex Gilman
BR+A
ashraebostonattendance@outlook.com

Chapter Program
Deanna Adkison
Fitzemeyer & Tocci
coo1cttc@ashrae.net

Chapter Technology Transfer
Deanna Adkison
Fitzemeyer & Tocci
coo1cttc@ashrae.net

CRC Alternate
Dan Carington
BR+A
617-925-8236
coo1pe@ashrae.net

CRC Delegate
Mike Gilroy
BR+A
coo1@ashrae.net

Golf Outing
Erin Popa
BR+A
617-925-8205
Epopa@brplusa.com

Grassroots Advocacy Committee
Kevin Doty
Victaulic
coo1ggac@ashrae.net

Historian
Eric Edman
BR+A
617-925-8325
coo1his@ashrae.net

Honors & Awards
Will Cunningham
BR+A
coo1tha@ashrae.net
Bob Persechini
NV5
617-345-9885
Bob.Persechini@nv5.com

Membership Promotion
Will Cunningham
BR+A
coo1mem@ashrae.net

Nominating
Bob Persechini
NV5
617-345-9885
Bob.Persechini@nv5.com

Research Promotion
Mark Leonard
BR+A
617-925-8322
coo1rp@ashrae.net

Newsletter Editor
Sophia Scoon
Jacobs
northeastaire@gmail.com

Professional Development
Deanna Adkison
Fitzemeyer & Tocci
781-285-2262
dadkison@f-t.com

Publicity
Liz Desmaraiz
Trumbull Campbell
coo1pub@ashrae.net

Refrigeration
Steven Tafone
Suffolk Construction
978-774-1057
coo1ref@ashrae.net

Student Activities
Yuka Narisako
BR+A
coo1sa@ashrae.net

Sustainability
Lance Brown
BVH
LanceB@bvhis.com

Special Events
Erin Popa
BR+A
617-925-8205

Teri Shannon
ashraebostonspcialevents@outlook.com

Website
Alex Gilman
BR+A
coo1web@ashrae.net

WiA
Sophia Scoon
Jacobs
sophia.scoon@jacobs.com

YEA
Willie Dawkins
NE Applied Products
coo1yea@ashrae.net

ASHRAE RESEARCH

ASHRAE Boston Chapter Contributors

Investors Who
Care About
Tomorrow



CONTACT Mark Leonard at coo1rp@ashrae.net

Mail Check (Payable to "ASHRAE Research") to:

ASHRAE RESEARCH
Mark Leonard
c/o Bard, Rao + Athanas Consulting Engineers
10 Guest St. 4th Floor
Brighton MA 02135

**Your contribution puts us closer to achieving our goal.
Please send what you can today!**

Individual contributions of \$100 or more and Corporate contributions of \$150 or more receive this year's Commemorative Coin and Honor Roll Contribution status.

Name: _____

Company: _____

Address: _____

TEL: _____

INDIVIDUAL

\$25.00	\$50.00	\$100.00	\$200.00
---------	---------	----------	----------

Other: _____

CORPORATE

\$250.00	\$500.00	\$1,000.00	\$2,000.00
----------	----------	------------	------------

Other: _____



NorthEastAire

ASHRAE - BOSTON CHAPTER www.ashraeboston.org

Sophia Scoon

Jacobs

120 St. James Ave. 5th Floor, Boston, MA 02116

(P) 617-2504854 d

northeastaire@gmail.com